

Roger On™

Technical data.

roger

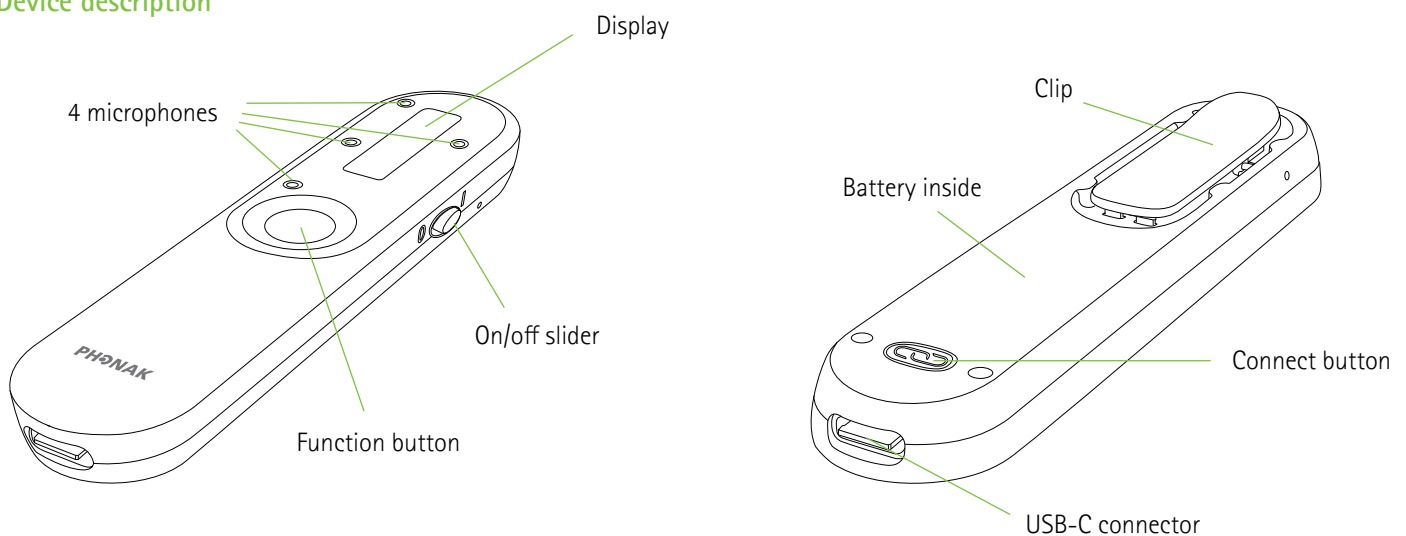
Roger On is a versatile mobile microphone into the Roger Earpiece System. Its small and lightweight design is ideal to conceal as gateway between a belt-pack and the Roger Earpiece or in situation where someone is whispering to the talent.

Technical data

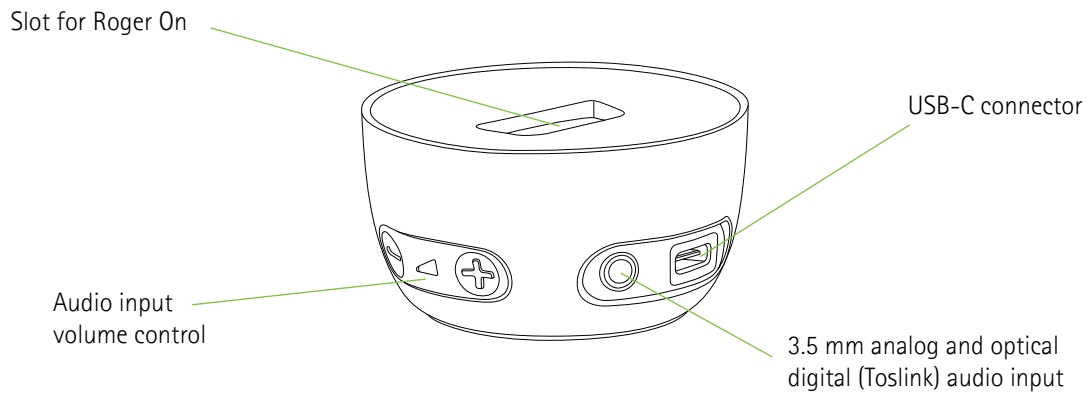
Type	Roger microphone
Dimensions (L x W x H)	99.7 x 23.5 x 13.6 mm (3.93 x 0.93 x 0.54")
Weight	27 g (0.95 oz)
Color options	Champagne
Included accessories	Power supply with USB cable, docking station, optical audio cable, analog audio cable, lanyard, case
Operating conditions	0° to +40° Celsius (+32° to +104° Fahrenheit) Relative humidity of <90% (non-condensing)
Transport and storage conditions	-20° to +60° Celsius (-4° to +140° Fahrenheit) Relative humidity of 90% for a long period of time



Device description

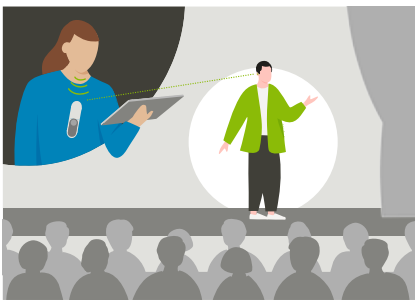


Docking station description



Use cases

On stage



Movie



Other possible use cases

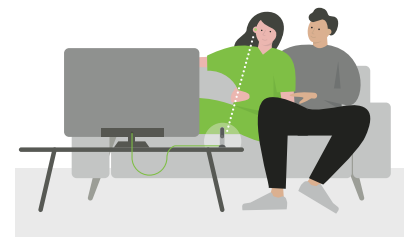
On the table



Hold in the hand (pointing)



Streaming audio



Features

- Audio input for beltpack and multimedia
- Proven Roger speech-in-noise performance¹
- Orientation independent presenter mode
- Pointing mode 2.0
- Multiple microphone use in a network (MultiTalker Network)
- Protected against splash and dust IP54
- App for beam steering and remote control

myRogerMic app



Microphone characteristics

Number of microphones	4
Microphone modes	Table, Pointing, Presenter

Radio information

Streaming technology	Roger technology
Frequency range	2.4 GHz ISM band including adaptive automatic frequency hopping
RF power	100 mW max.
Transmission range (clear line of sight, free field)	Up to 25 meters / 80 feet

Audio information

Audio input	Digital and analog via USB-C socket
Two-way audio	Digital via USB-C socket
Audio input docking station	- Digital optical (Toslink) - Analog via 3.5 mm socket
Supported digital formats	Stereo (PCM)
Max. analog voltage	1 Vrms
Audio bandwidth	100 Hz – 7.3 kHz

Power supply

Type	DC, stabilized
Primary voltage	100-240 V
Secondary voltage	5 VDC
Max. current	1.0 A
Plug	USB-C
Important notice	Only use power supply delivering 5VDC, > 500 mA

Battery

Type	Lithium Polymer
Capacity	260 mAh
Voltage	3.7 V
Operating time	8h with normal range 6h with extended range

Receiver compatibility

Compatible Roger receivers	Roger Earpiece and Roger Earpiece v2
Max. connected receivers	Unlimited

Microphone compatibility (MultiTalker Network)

A Roger On in a MultiTalker Network functions only in Presenter mode (hanging around the neck or clipped on the chest)

Compatible Roger microphone	Roger On™ v2
Max. connected microphones	Up to 10

Standards

Europe	EN 300 328, EN 301 489, EN 62368-1, IEC/EN 62311
Canada	RSS-247, RSS-102
Japan	ARIB-T66
USA	CFR 47, part 15.247, FCC OET Bulletin No.65

Ingress protection

IP54	Protected against splash and dust
------	-----------------------------------

¹ Thibodeau L. M. (2020). Benefits in Speech Recognition in Noise with Remote Wireless Microphones in Group Settings. Journal of the American Academy of Audiology, 31(6), 404-411.